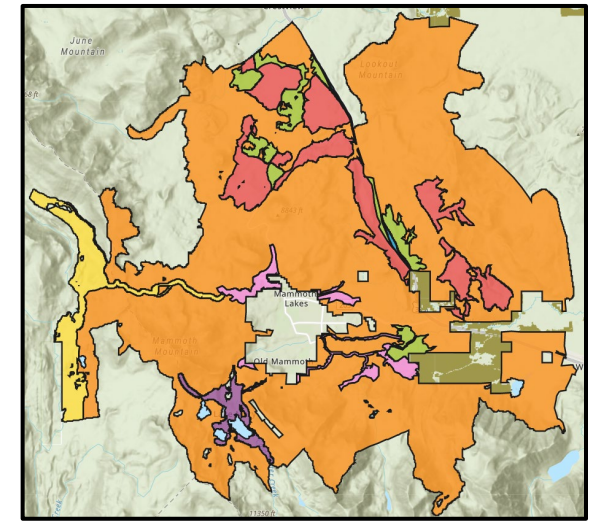


Eastern Sierra Climate & Communities Resilience Project



Ground with a NEPA decision (Three Creeks, Reds Meadow, Lakes Basin, etc.)

Work here can be funded with grants like the California Climate Investments Forest Health Grant and will involve a mixture of Rx burning, mechanical treatments, pile burning, and biomass utilization.

Ground without a NEPA decision (all the area in between)

The Inyo Forest wide Rx (prescribed) Fire NEPA Project (likely to be signed soon)

Work here will need proposed actions to prepare the ground for wild and Rx fire. Proposed actions for the ESCCRP NEPA will only involve mechanical treatments.

After forests are treated mechanically through the ESCCRP NEPA (or deemed able to accept fire as is), treatments will be followed by fire that will be covered by the Forest wide Rx Fire NEPA.

- Managed wildland fire for multiple resource objectives
 - Not immediate suppression
- Prescribed fire following mechanical treatments
 - Where necessary
- Pile burning of activity generated fuels
- Biomass utilization
 - Handling fuels without needing pile burning

