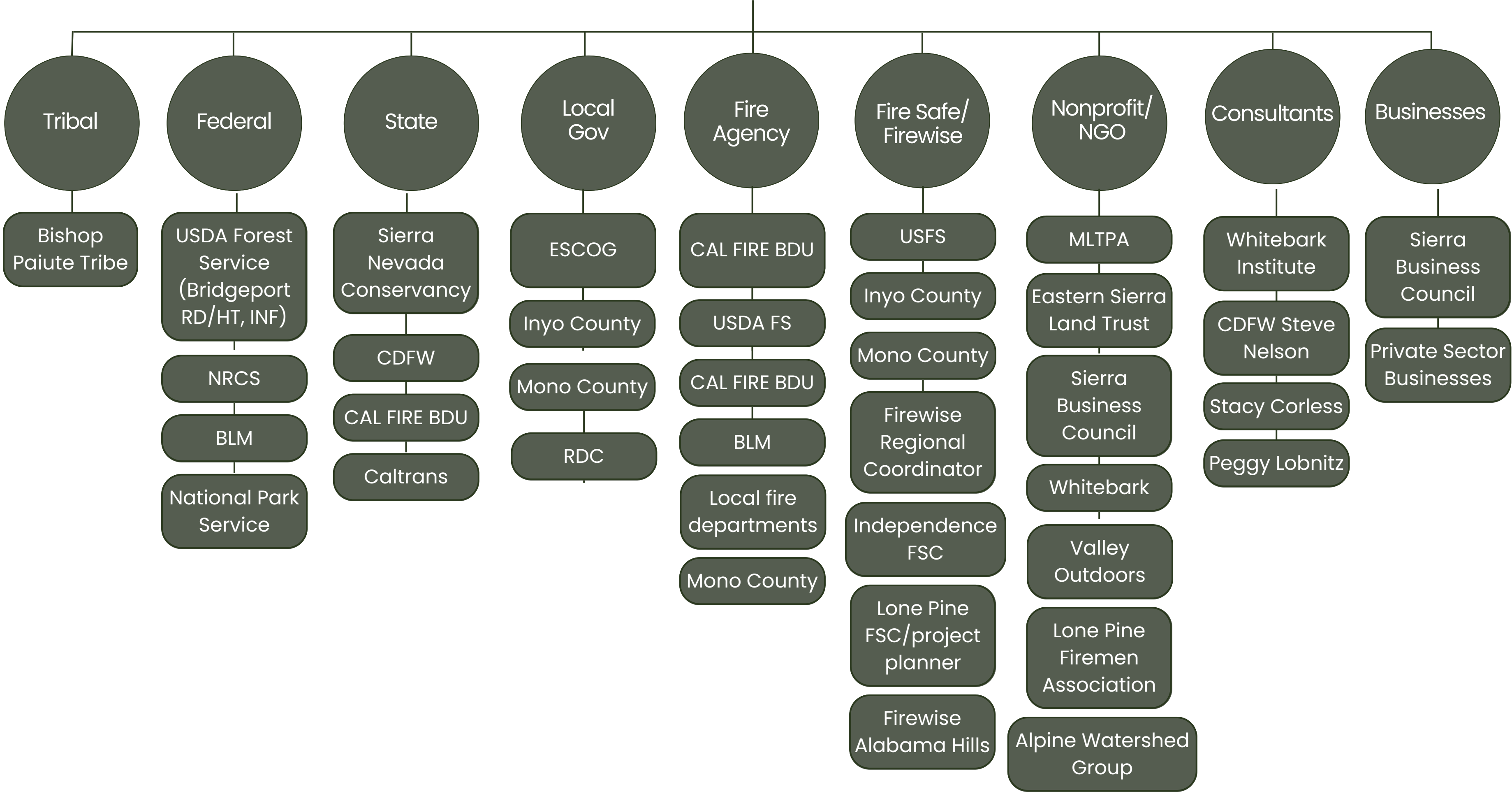
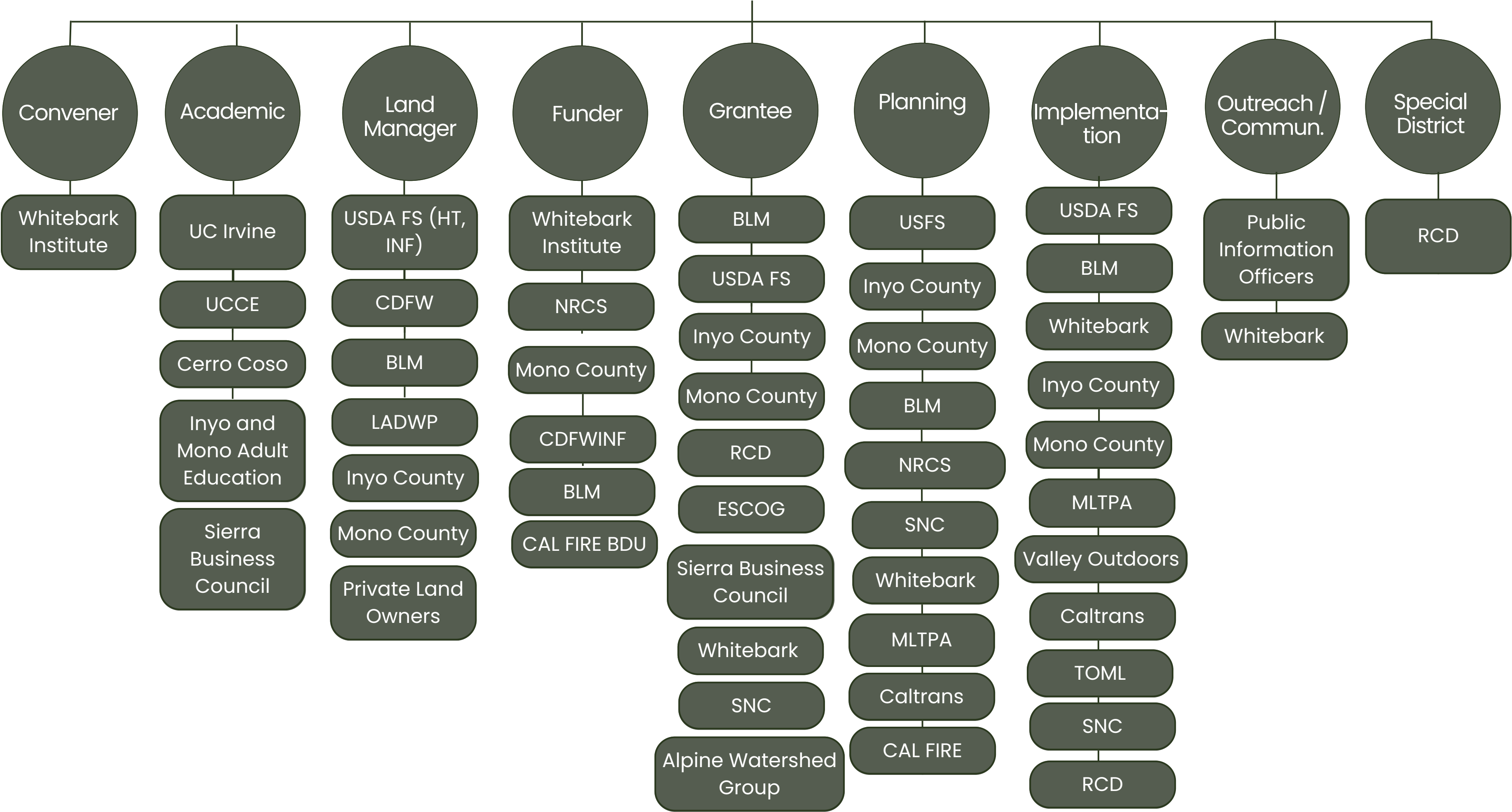


Eastern Sierra Wildfire Alliance Participants



Eastern Sierra Wildfire Alliance Participants



Eastern Sierra Wildfire Alliance existing goals

Increase the pace and scale of projects, enhance communication and act as a repository for resources and information

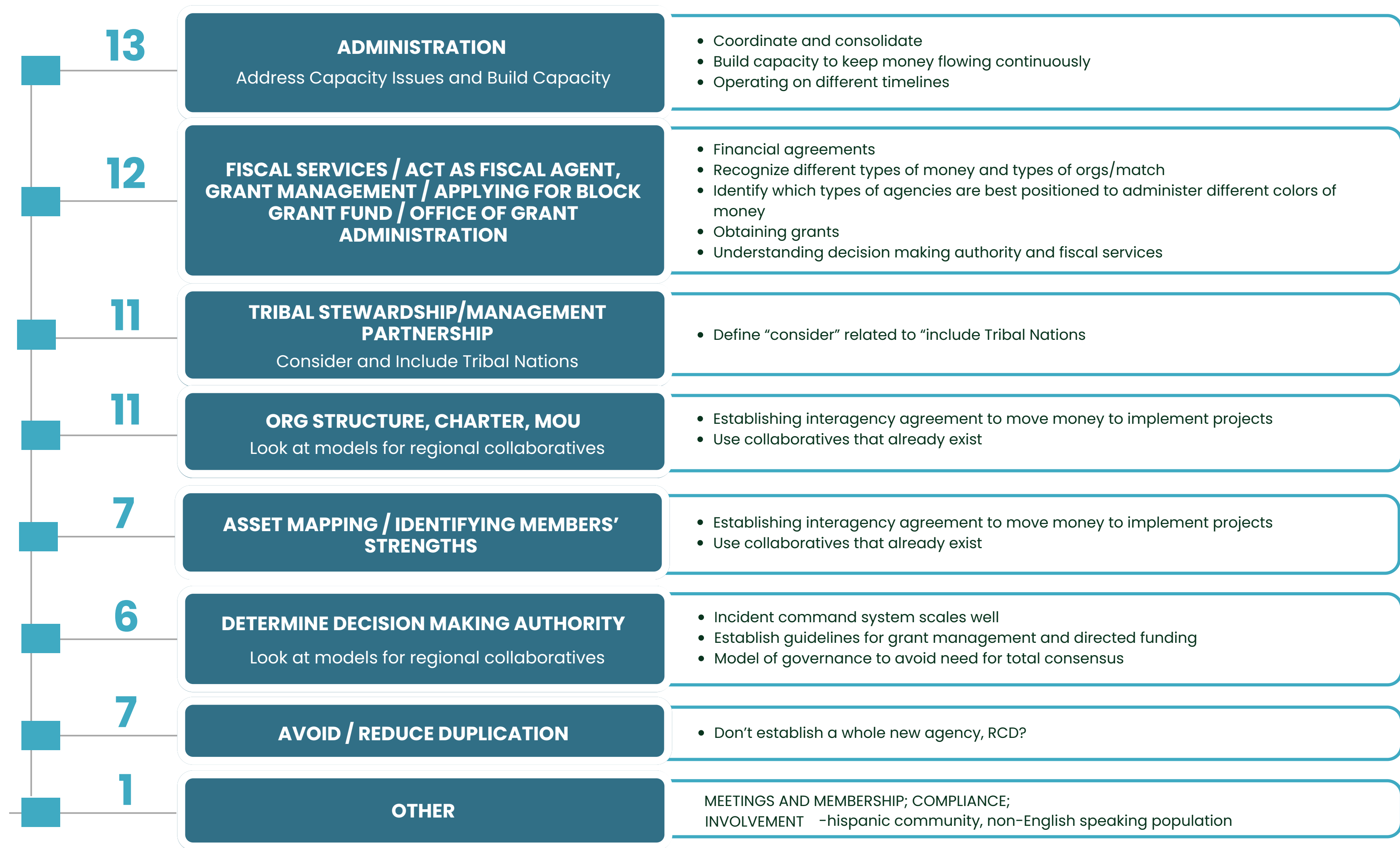
Proposed additional goals



Additions

- Understanding cross-jurisdictional efforts (mapping, project status)
- New approach/mindset, not just repeating what was done before
- Landscape orientation
- Find agreement, consensus on priorities
- Tribal presence in ESWA leadership
- Cooperation, coordination across land ownership
- Understanding impact of management changes
- Integrating the Wildfire Adapted Community model into the ESWA goals
- Create a repository of knowledge of hydrant locations and responsibilities; collaborate with local fire depts for hydrants for locations
- Add a component of mailing addresses for information to those not on internet

GOVERNANCE



PROJECTS

16	<div><div>MULTI-JURISDICTIONAL PARTNERSHIP</div><div>Early Collaboration</div></div>	
15	<div><div>PROJECT LIST AND PRIORITIZATION</div><div>Possible criteria: agency mandates, funding and match priorities, co2 emissions, wildlife impacts, WUI, existing projects/ongoing efforts</div></div>	<ul style="list-style-type: none">• What is a project? Funding based, lead based, scale and timeframe, standard phases and definitions• Integration of recreation projects, supports workforce working in multiple areas• Create & manage database with easy access for all partners• Identify completed and potential projects• Determine prioritization framework that addresses all parties' concerns
13	<div><div>ADDRESS PAIN POINTS</div><div>Staffing, Agency Mistrust, Competing for Resources</div></div>	<ul style="list-style-type: none">• Housing• Related community infrastructure, housing healthcare• Rapid regulatory changes, parochial knowledge, ie, local water systems
10	<div><div>WORKFORCE DEVELOPMENT, SERVICES</div></div>	<ul style="list-style-type: none">• "grow our own"—reduces cost of work, opportunities for local students and youth• Wildfire prevention can be a business opportunity• Nurture businesses to support home hardening, fuels reduction, biomass, tax-based funding won't always work• Link partners with opportunities like ACE and other small implementation groups/partners; explore opportunities for youth crews/workforce
6	<div><div>COMMUNITY INPUT</div><div>Meaningful engagement in project development; Build on existing efforts, local knowledge</div></div>	<ul style="list-style-type: none">• Tap into the local knowledge base even if it defines landscape management mistakes/mishaps• Continuity
5	<div><div>REDUCE GAP BETWEEN CONCEPT TO FUNDING AND IMPLEMENTATION</div></div>	
4	<div><div>RESEARCH, DATA, SCIENCE</div></div>	<ul style="list-style-type: none">• Link between research, data and science and implementation• Assign someone to track new fire science developments and use the information to inform public communication• Group as environmental planning and permitting, community input and research /science
3	<div><div>ENVIRONMENTAL PLANNING AND PERMITTING</div></div>	<ul style="list-style-type: none">• Project management and facilitation• Integrated data and modeling tools• Holistic resource planning—water resources, watershed management
1	<div><div>OTHER</div></div>	PROJECT TRACKING; FINANCIAL ANALYSIS - incentivize private sector for full cycle

COMMUNICATIONS

